

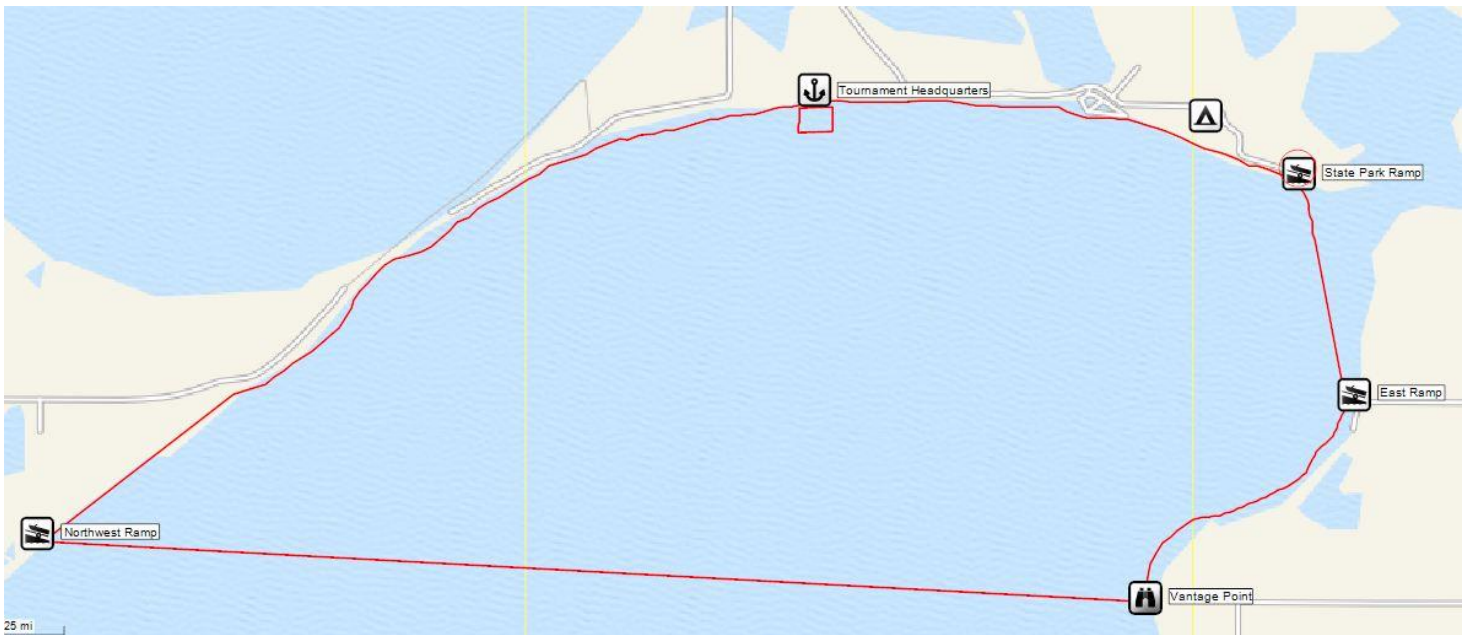
Lake Thompson Ice Fishing Derby Tournament Boundaries

ICE FISHING IS DANGEROUS. TRAVEL ON THE ICE AT YOUR OWN RISK.

The boundaries shown below do not imply safe ice conditions. Know the thickness of the ice before traveling across it. Ducks Unlimited, South Dakota GF&P, North Shore Bar and Grille, Tournament Officials and Tournament Sponsors will not be liable for loss or damage to people or property.

Safety First and have fun! - Wear your Ice Cleats. There are some very slippery areas with no snow cover.

Notice: Fish Shacks left on state property may be ticketed by the GF&P



Tournament Headquarters are located on the lake south of North Shore Bar and Grille. When choosing a location to setup, remember that fish will need to be taken to headquarters for registration during the event.

Fishing is allowed on Lake Thompson within the boundaries above.

North Boundary – Lake Shore, keep away from the inlet near the state park swim beach

South Boundary – A line between the Vantage Point and the Northwest Ramp

East Boundary – A line between the State Park Ramp, East Ramp and around the shore to Vantage Point

West Boundary - Lake Shore

Fishing in Schaefer's Slough is not Allowed